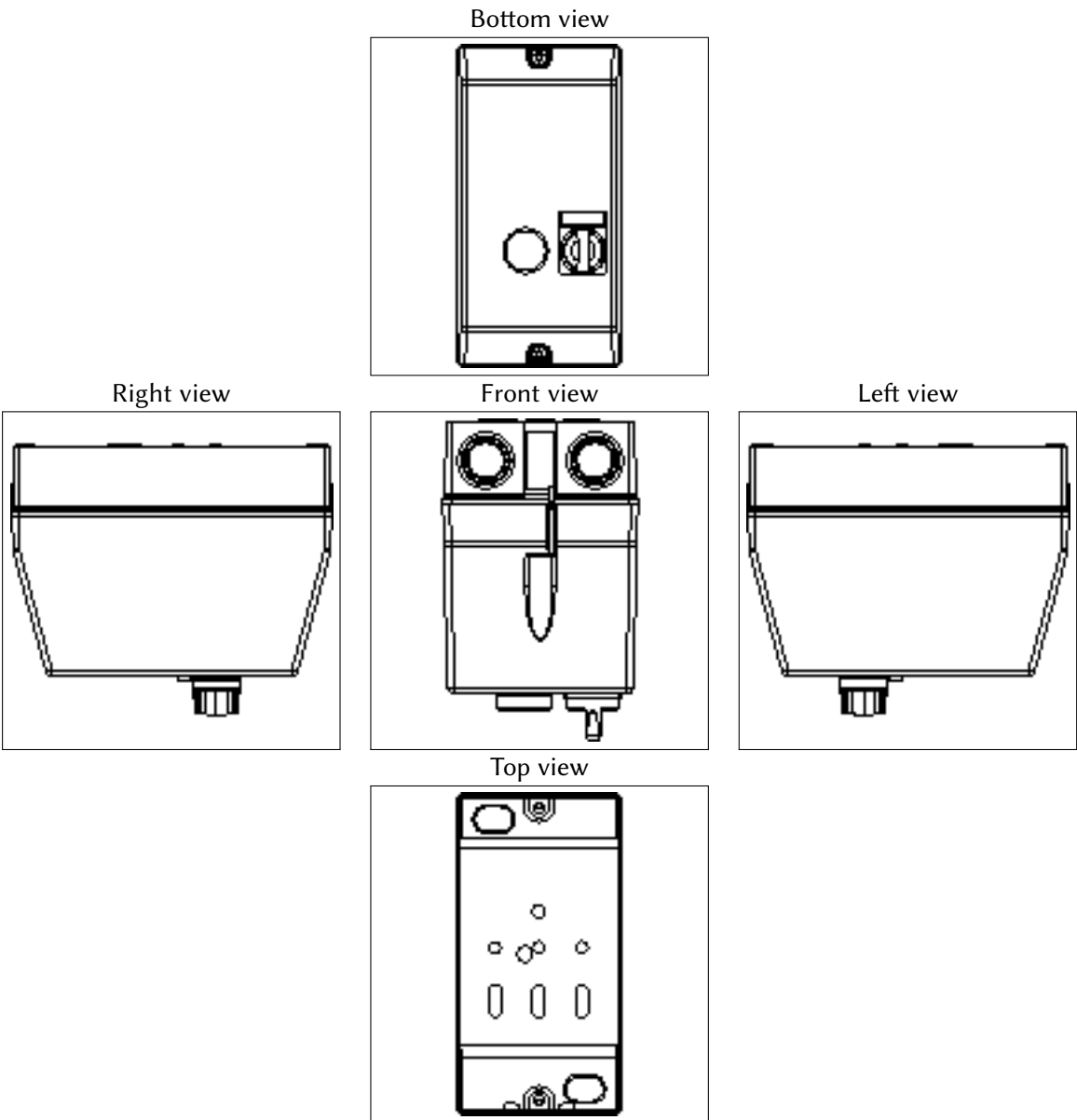


Contents

	Page
1 2D Views	2
2 Configuration settings	3
3 Attachments / Technical document	4

1 2D Views



2 Configuration settings

Configuration	
Part Number	LE1D09P7A13
Description	TeSys LE - enclosed DOL starter - 9 A or 12 A- AC coil - selector 2 pos + reset - LE1D-S1-A13_ CAD

Bill of Materials Data	
Manufacturer	Schneider Electric
Description	TeSys LE - enclosed DOL starter - 9 A or 12 A- AC coil - selector 2 pos + reset - LE1D-S1-A13_ CAD
Part Number	LE1D09P7A13

3 Attachments / Technical document

Please double click with left mouse button on a paper clip symbol to open a file. You could also save a file when you click the symbol with the right mouse button.

- For further technical information about these products, please consult our site www.schneider-electric.com 